



MINERALBAD BERG

At a Glance



MINERALBAD  BERG
By tradition

Rich in carbonic acid, crystal clear and dewy

Stuttgart is home to the largest mineral water resource in Western Europe. Officially certified medicinal water flows in all three mineral spas in Stuttgart. Here **at Mineralbad Berg, six mineral water sources** are used for your well-being. **All of them** have been **officially certified medicinal sources**. A true natural treasure for body, mind and soul.



Indications:

- Heart, vascular and circulatory diseases
- Diseases of the musculoskeletal system (rheumatic diseases)
- Diseases of the respiratory organs
- General states of weakness
- Convalescence
- Neurological and neurovegetative disorders
- Skin diseases
- Pain including back pain

Contraindications:

- Acute inflammatory processes
- Recent heart attack
- Fresh inflammatory liver and gall bladder disease
- Florid gastric or intestinal ulcers
- Cachectic conditions
- Decompensated heart disease
- Decompensated metabolic disorders

If you have any health restrictions, please consult your doctor.

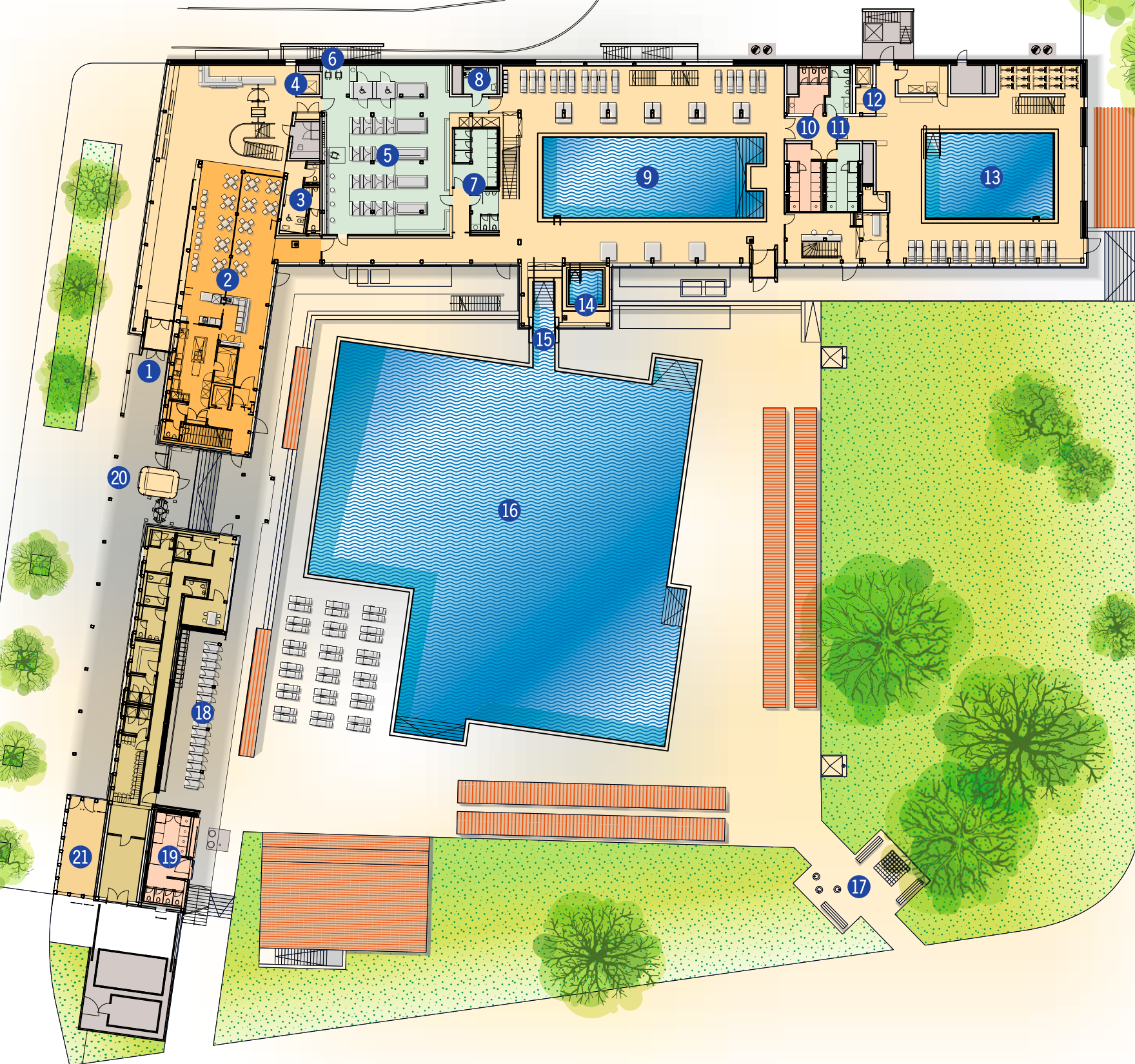
Water analysis of the officially certified medicinal spas

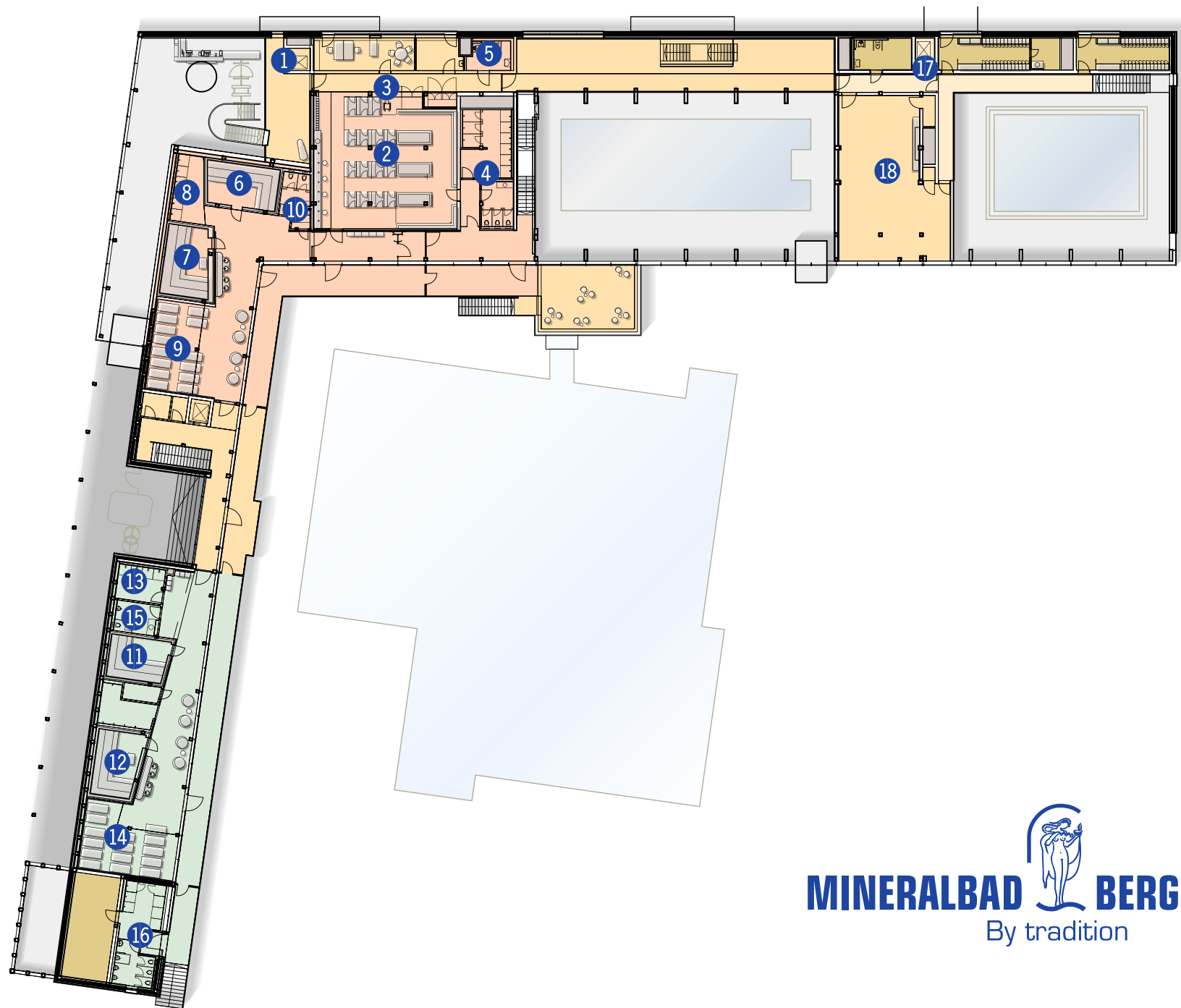
		Berger Urquell	Berg Nordquelle	Berg Südquelle	Berg Westquelle	Berg Ostquelle	Berg Mittelquelle
Mineral water type		Sodium-Calcium-Chloride-Sulphate-Hydrogen carbonate Thermal acid	Calcium-Sodium-Sulphate-Chloride-Hydrogen carbonate Mineral Spring water	Calcium-Sodium-Sulphate-Chloride-Hydrogen carbonate Mineral Spring water	Calcium-Sodium-Sulphate-Chloride-Hydrogen carbonate Mineral Spring water	Calcium-Sodium-Sulphate-Chloride-Hydrogen carbonate Mineral Spring water	Calcium-Sodium-Sulphate-Chloride-Hydrogen carbonate Mineral Spring water
Withdrawal temperature (°C)		20,8	19,0	19,6	19,1	19,4	19,1
		mg/l	mg/l	mg/l	mg/l	mg/l	mg/l
Dissolved and free carbon dioxide (CO ₂)		1.590	924	1.190	1.080	1.070	1.030
Cations	Calcium (Ca ²⁺)	608	444	518	480	494	480
	Lithium	2,3	1,2	1,7	1,4	1,5	1,4
	Magnesium (Mg ²⁺)	84,7	80,3	84,2	82,5	83,3	82,5
	Sodium (Na ⁺)	652	331	450	387	416	389
	Potassium (K ⁺)	48,9	26,6	35,5	30,4	32,4	30,7
	Iron	2,1	1,1	1,8	1,3	1,5	1,4
Anions	Chloride (Cl ⁻)	915	476	642	554	591	555
	Sulfate (SO ₄ ²⁻)	1.010	744	846	795	812	788
	Hydrogen-carbonate (HCO ₃ ⁻)	1.159	836	952	873	909	915

Spa area

Ground floor

- 1 Entrance
- 2 Gastronomy
- 3 WC
- 4 Elevator
- 5 Changing room men with
- 6 Wheelchair swap space
- 7 WC/showers
- 8 WC/showers barrier-free
- 9 Mineral water indoor pool
Summer: may to september
approx. 30 °C / 86 °F
Winter: october to april
approx. 32 °C / 90 °F
- 10 WC/showers women
- 11 WC/showers men
- 12 Elevator
- 13 Mineral exercise pool
approx. 30 °C / 86 °F
- 14 Warm pool approx. 34 °C / 93 °F
- 15 Swim out channel
- 16 Natural mineral water
outdoor pool, chlorine-free
approx. 22 °C / 72 °F
- 17 "Berger Urquell" – Mineral water
drinking fountain/Chess game
- 18 Summer changing area
- 19 WC/showers women
- 20 Entrance mineral open air bath
- 21 "Elisenquelle" – Mineral water
drinking room





Sauna area

Upper floor

- ① Elevator
- ② Changing room women with wheelchair swap space
- ③ Wheelchair swap space
- ④ WC/showers
- ⑤ WC/showers barrier-free

Sauna area women

- ⑥ Warm air room with aroma approx. 60–65 °C / 140-149 °F
- ⑦ Infusion Sauna approx. 90–95 °C / 194-203 °F
- ⑧ Cooling showers
- ⑨ Relaxation room
- ⑩ WC

Sauna area men:

- ⑪ Warm air room with aroma approx. 60–65 °C / 140-149 °F
- ⑫ Infusion Sauna approx. 90–95 °C / 194-203 °F
- ⑬ Cooling showers
- ⑭ Relaxation room
- ⑮ WC
- ⑯ WC/showers men
- ⑰ Elevator
- ⑱ Gymnastics room

Opening hours & Admission fees

Opening hours

Swimming pool and sauna Monday to Sunday 9:00 am to 10:00 pm
The sauna is gender-separated.

Last admission one hour before closing time.
Pools close 20 minutes before closing time.

Open year-round. Closed on Christmas Eve, Christmas Day, New Year's Eve, New Year's Day and Good Friday.

The Mineralbad Berg is a healing and health spa without specific child-friendly facilities. It is not recommended that children under the age of 7 visit the pool. Children under the age of 3 are not allowed to use the pools.

Children and teenagers up to and including 15 years of age may only enter with an accompanying adult. Minors are only allowed to enter the sauna with a parent or guardian.

* Reduced prices for

- ▶ children/youth from 7 to 17 years inclusive,
- ▶ students in general education or technical schools, university students,
- ▶ disabled persons.

The corresponding ID card must be shown; in addition, the presentation of the identity card may be requested.

Other prices

	Euro
"Schwabenkärte" with discount of 5 % Rabatt on the non-reduced single admission and the sauna admission price	50,00
"Schwabenkärte" with discount of 10 % Rabatt on the non-reduced single admission and the sauna admission price	100,00
"Schwabenkärte" with discount of 15 % Rabatt on the non-reduced single admission and the sauna admission price	200,00
"Schwabenkärte" with discount of 20 % Rabatt on the non-reduced single admission and the sauna admission price	400,00
Card deposit	3,00

No discount on electronic cards for multiple use and reduced single admissions.

Admission fees

Swimming pool		Euro
Single admission day pass	normal	12,00
	reduced price*	9,60
Single admission bathing time 2 hours	normal	9,00
	reduced price*	7,20
Electronic card for multiple use 2 hours		
10 admissions to pay, the 11th for free	normal	90,00
	reduced price*	72,00
Surcharge for each additional 20 minutes	normal	0,70
	reduced price*	0,60
Sauna area		
Surcharge on the swimming pool admission price		6,00
Can be charged on electronic card.		

Important Information

Children up to and including 6 years have free admission to the swimming pool.

Accompanying persons of severely disabled persons receive free admission if a "B" or "H" is entered in the severely disabled person's ID card.

Price reduction of 1.00 Euro on the single admission ticket for holders of the Stuttgart Bonuscard.

When leaving the pool, the admission ticket **loses its validity.**

Electronic cards for multiple use, "Schwabenkärte" and vouchers are valid for **4 years from purchase.**

Mineralbad Berg

Am Schwanenplatz 9, 70190 Stuttgart

Phone +49 711 216-99890

stuttgarterbaeder.de/kontakt